



Energy Storage System



Home Energy Storage System

PCS

5Kw Hybrid Inverter

- High-efficiency power supply
- Solar and smart charging support
- Flexible operation in various environments
- Multi-mode output and compatibility
- Remote monitoring and smart optimization



Model: YNN1F-A5.5P

Specification

PV String Input	
Max. Continuous PV Input Power	5.5kW
Max. DC Voltage	500Vdc
MPPT Voltage Range	120~450Vdc
Max. Short Circuit Current per MPPT	4
Max. PV Input Current	8A
Max. PV Charging Current	100A
AC Output (Grid)	
Nominal AC Voltage	230VAC
Output Voltage Range	170~280Vac (computer) / 90~280Vachome appliances)
AC Grid Frequency Range	50/60 Hz (auto detection)
Max. AC Charging Current	60A
Max. Charging Current	100A

AC Output (Load)	
Max. AC Output Power	11KVA
Waveform	Pure sine wave
Transfer Time	10ms (computer) / 20ms (home appliances)
Peak Factor	3:1
Permissible Power Factor	0.6 to 1 (inductive and capacitive loads)
Nominal Output Voltage(L-N)	220/230VAC±5%
Nominal Output Frequency	60Hz
THDv	<2% (linear load)
Battery Input	
Nominal Battery Voltage	48Vdc
Float Charging Voltage	54Vdc
Overcharge Protection	63Vdc
Charging Method	Constant current/constant voltage
Efficiency	
Conversion Efficiency (PV)	96%
Conversion Efficiency (Battery)	93%
General Specifications	
Dimensions (WxHxD)	448 x 295 x 120mm
Weight	10KG
Operating Temperature Range	-25"~50"c
Operating Humidity	5~95% (non-condensing)
Communication Method	RS485/RS232/Dry Contact
Display	LCD
Protection	Overload protection (5 seconds at 150%+ load; 10 seconds at 110% to 150% load)

12Kw Hybrid Inverter

(American Standard)

- Stylish Design with Full Protection
- Certified Safety
- Low Voltage, High Safety
- Smart Monitoring
- LED Display for Clarity



Model: YNT 48KSD-E12KD

Specification

PV String Input		Backup AC Output (Grid-Tied)	
Rated Voltage	400Vdc	Rated Output Current	150A
PV Start Voltage	120Vdc	Max. Output Current	200A
MPPT Voltage Range	120~480Vdc	Rated Continuous Output Power	36kW
MPPT Voltage Range (Full Load)	200~425Vdc	Max. Output Power	48kW
Number of MPPT / Strings per MPPT	3/2	Backup Load Overcurrent Protection	200A
Max. Continuous PV Input Current (per MPPT)	30A	Battery Input	
Max. Continuous PV Input Current (per String)	15A	Battery Type	Lithium Battery
PV Short Circuit Current (Isc PV)	40A x 3	Voltage Range	44-57 Vdc
Max. Input Power per MPPT	9kW	Rated Voltage	51.2 Vdc
Max. Continuous PV Input Power	22kW	Max. Charging/Discharging Current	200N240A
		Max. Charging/Discharging Power	10/12kW
AC Output (Grid)		General Specifications	
Rated Voltage	240/208Vac	Dimensions (WxHxD)	540 x 1050 x 240mm
Rated Frequency	50Hz/60Hz	Weight	73KG
Max. Continuous Input Current	150A	Cooling Method	Fan Cooling
Max. Input Current	200A	Max. Operating Altitude	2000m
Max. Continuous Input Power	36kW	Operating Temperature Range	-20°C-55°C, derating above 50° C
Max. Input Power	48kW	Operating Humidity	0-95% (non-condensing)
Power Factor (Cos φ>), Adjustable	0.8 leading - 0.8 lagging	IP Class	IP66
Rated Output Power	12kW	Communication Methods	CAN2.0/RS485/WIFI/4G
Max. Continuous Output Apparent Power	12kVA	Display	LCD/APP
		Protection Category	Class II
Backup AC Output (Off-Grid)		Overvoltage Category	II (DC side), III (AC side)
Max. AC Output Power	11KVA	Topology	Battery Isolation
Waveform	Pure sine wave	Conversion Efficiency (PV)	97.0%
Transfer Time	10ms (computer) / 20ms (home appliances)	Conversion Efficiency (Battery)	95.0%
Peak Factor	3:1	PPT Conversion Efficiency	99.5%
Permissible Power Factor	0.6 to 1 (inductive and capacitive loads)	Protection	Short Circuit, AC Leakage , Ground Fault , Anti-Islanding , Overload , Lightning , DC Polarity
Nominal Output Voltage(L-N)	220/230VAC±5%	Grid Regulation	IEEE 1547 2018 / IEEE 1547.1 2020 / UL 17418B
Nominal Output Frequency	60Hz	Safety Standards	UL1741 / CSA107.1 / CSA No.330 / UL 1699B
THDv	<2% (linear load)	EMC	FCC Part15, Class B
Backup AC Output (Off-Grid)			
Rated Voltage (L-L)	240Vac/208Vac		
Rated Frequency	50Hz/60Hz		
Rated Output Current (L-L)	50A		
Rated Output Current (L-N)	50A		
Max. Continuous Output Current (L-U)	50A		
Max. Continuous Output Current (L-N)	62.5A		
Backup Load Overcurrent Protection	200A		

Home Energy Storage System

BATTERY

5Kwh Battery Module(3U)



5KWh Battery Module(3U)

Model: YNJB16S100ND-L

Specification

Battery Module Performance Parameters	
Rated Voltage	51.2Vdc
Voltage Range	44.8~57.6Vdc
Nominal Capacity	100Ah
Rated Energy	5.12kWh
Rated Discharge Current	50A
Max. Discharge Current	100A
Rated Charge Current	50A
Max. Charge Current	100A
Max. Discharge Power	5.12kW
Max. Charge Power	4kW
Efficiency	≥95% DOD
Voltage Sampling Quantity	16S
Battery Balancing	Active Balancing 3A
Dimensions (WxHxD)	484 x 133 x 470mm
Weight	40±1KG
Operating Temperature Range	Charging : 0°C~45°C Discharging : -20°C~55°C
Storage Temperature	0-25°C/12 months
IP Class	IP52
Communication Method	RS485/CAN
Cycle Life	≥6000 times
Additional Features (Optional)	
Heating Function	Activates when charging temperature is below 0°C (automatically managed by BMS)
Certifications	
Certification Standards	IEC62619/CE/UN38.3

5Kwh Battery Module(2U)



5KWh Battery Module(2U)

Model: YNJB16S100KX-L

Specification

Battery Module Performance Parameters	
Rated Voltage	51.2Vdc
Voltage Range	44.8~57.6Vdc
Nominal Capacity	100Ah
Rated Energy	5.12kWh
Rated Discharge Current	50A
Max. Discharge Current	100A
Rated Charge Current	50A
Max. Charge Current	100A
Max. Discharge Power	5.12kW
Max. Charge Power	4kW
Efficiency	≥95% DOD
Voltage Sampling Quantity	16S
Battery Balancing	Active Balancing 3A
Dimensions (WxHxD)	600 x 90 x 448mm
Weight	40±1KG
Operating Temperature Range	Charging : 0°C~45°C Discharging : -20°C~55°C
Storage Temperature	0-25°C/12 months
IP Class	IP52
Communication Method	RS485/CAN
Cycle Life	≥6000 times
Additional Features (Optional)	
Heating Function	Activates when charging temperature is below 0°C (automatically managed by BMS)
Certifications	
Certification Standards	UL 1973/CUL 1973/IEC62619/60730/CE/UN38.3

Industrial Energy Storage System

PCS

125KW

INDUSTRIAL ESS PCS

Multi-mode Switching

Features autonomous frequency/voltage regulation, controlled regulation, and supports various working modes like grid-tied, off-grid, and hybrid modes with STS.

Stable Power Supply

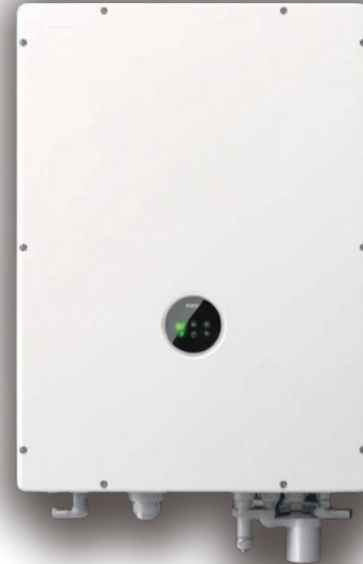
Independent off-grid inverter function ensures uninterrupted power for critical loads by establishing a microgrid system.

High Efficiency

High-frequency technology design with high power density, compact, and space-saving.

Specification

PV String Input	
Max. DC Voltage	1000V
Mini. DC Voltage	580V
DC Voltage Range	580 ~ 1000Vdc
Max. DC Current	242A
AC Output (Grid)	
Rated AC Power	125kW
Max. AC Power	138kW
Rated AC Current	180A
Max. AC Current	199A
Rated AC Voltage	400Vca
AC Voltage Range	400Vac, (-15% - +10%)
Rated Grid Frequency	50/60Hz(±5Hz)
THD	≤3% (Rated Power)
Power Factor	>0.99
Adjustment Range	1 (Leading) ~ 1 (lagging)
AC Output (Load)	
Rated AC Voltage	400Vac±3%; 3L+PE
AC Voltage Distortion	<1.5(resistive load)
Rated AC Frequency	50Hz
Unbalanced Load Capability	100%
Overload Capacity	110% for normal operation, 120% for 1 minute



Smart Communication

Supports grid dispatch and offers flexible connectivity with RS485, CAN, and other communication methods.

Superior Cooling

Independent air channel design ensures efficient heat dissipation for long-term stable operation.

Efficiency	
Max. Efficiency	>98.5%
General Specifications	
Dimensions (WxHxD)	650 x 310 x 900mm
Weight	85KG
Cooling Method	Forced Air Cooling
Max. Operating Altitude	4000m/(>3000m de-rating)
Operating Temperature Range	-30°C~ +60°C (> 45°Cde-rating)
Permissible Relative Humidity	0~100% (non-condensing)
IP Class	IP66
Communication	CAN/RS485
Display	LED
Protection	
DC Input Protection	Load Isolation Switch + Fuse
AC Input Protection	Circuit Breaker
Overvoltage Protection	DC Type II /AC Type III
Anti-Islanding Protection	Equipped
Overheat Protection	Equipped
Noise Level	<75dB

Industrial Energy Storage System

BATTERY

1100KWh

INDUSTRIAL ESS

Extend Battery Life, Worry-Free Durability

Utilizes a low-voltage parallel design to distribute current and voltage, enhancing battery stability and lifespan while minimizing instantaneous current impact.

Real- Time Monitoring, Enhanced Safety

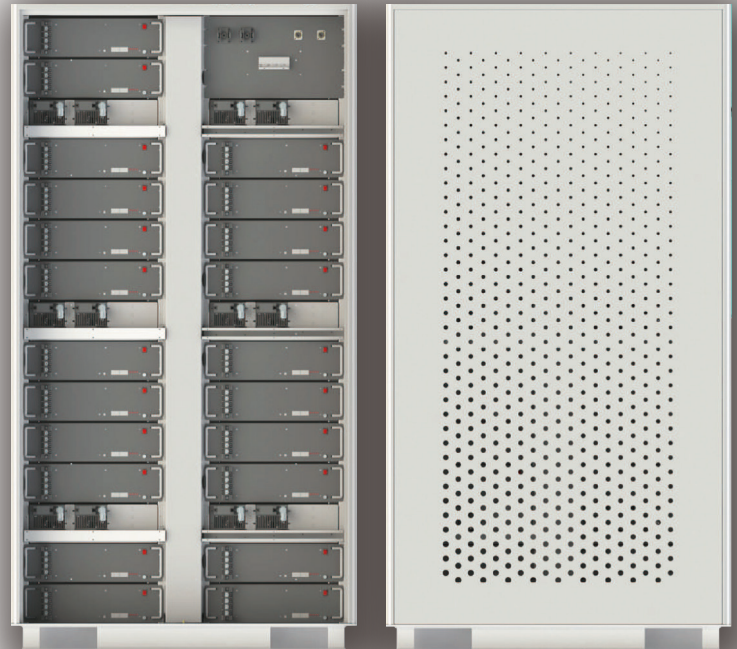
Monitors individual cell voltage and temperature with an independent BMS management system to prevent thermal runaway, ensuring overall safety.

Comprehensive Battery Protection

Offers multi-layered battery protection and fault isolation, ensuring safe operation with module failures not affecting others.

Hot-Swappable Maintenance

Supports hot-swapping, allowing module replacement during operation without downtime, achieving a system availability rate of 99.99%.



Flexible Expansion

Compatible with market battery modules and PCS (Power Conversion System) with parallel expansion capability, meeting diverse power needs.

Reduced Risks for Safe Operation

Adopts a 48V low-voltage system, reducing the risk of electric shock, fire from Ohmic heating, DC arc ignition, and preventing thermal spread.meeting diverse power needs.

Specification

Performance Parameters	
Voltage Output Range	500 - 850Vdc (adjustable)
Max. Discharge Power	100KW
Max. Output Current	150A
Max. Charging Power	100KW
Total Energy	220KWh
Battery Specification	51.2V100Ah
Number	44

General Specifications	
Dimensions (WxHxD)	1000 x 2200 x 1200mm
Weight	2200KG
Cooling Method	Fan Cooling
Operating Temperature	Charging 0°C- 56°C ; Discharging -20°C- 56°C
IP Class	IP21
Communication	CAN/RS485
Cycle Life	≥3000 times

Industrial Energy Storage System

UPS

UPS System

Real-time Monitoring

Easily monitor battery status with LCD display and PC parameter adjustments for convenient use.

Smart Alerts

Automatic alarms and notifications ensure safe system operation at all times.

Versatile Interfaces

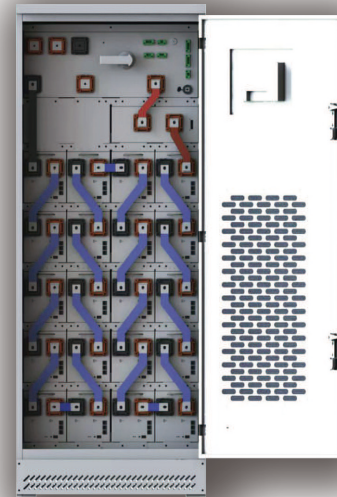
Supports RS485 communication and multiple output functions, allowing easy connection to other devices for enhanced system performance.

Powerful Expandability

Configurable to meet your needs, supporting parallel operation of multiple devices for various applications.

Multi-line Options

Offers two-line and three-line output choices, with standard and customizable configurations for diverse usage scenarios.



Model: YYNGB192S100YW-L Specification

General Specifications	
Dimensions (WxHxD)	800 x 2150 x 700mm
Weight	730KG
Cooling Method	Natural Cooling
Operating Temperature Range	Charging 0°C~56°C Discharging -20°C~56°C
IP Class	IP21
Communication Method	CAN/RS485/Dry Contact
SOC Accuracy	0.05

Performance Parameters	
Rated Voltage	614.4Vdc
Battery Capacity	100Ah
Battery Energy	61.44kWh
Number of Battery Units	24
Battery Voltage Range	516 ~ 691.2Vdc
Max. Continuous Discharge Current	100A
Max. Peak Discharge Current	150A/10
Max. Output Power	61kW
Rated Charging Current	50A
Max. Allowable Charging Current	100A

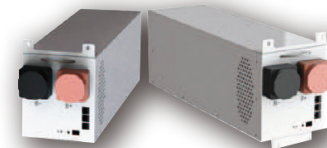
Battery Input	
Rated Voltage	25.6V
Voltage Range	21.5V-28.8V
Rated Capacity	100Ah
Max. Discharge Current	100A
Peak Discharge Current	150A/10S
Max. Charging Current	100A
Passive Balancing	≤300 mA

Model: YNJABS50CB-H

Battery Module

Performance Parameters	
Rated Voltage	25.6V
Battery Voltage Range	21.5V-28.8V
Battery Capacity	50Ah
Battery Cell Specification	3.2V50Ah
Cell Configuration	8S1P
Energy	1.28KWh
Max Continuous Discharge Current	500A

Max Peak Discharge Current	600A/10S
Max Output Power	10.75kW
Max Charging Current	50A
Passive Balancing	≤300 mA
Dimensions (WxHxD)	590 x 185 x 180mm
Weight	20KG
Cooling Method	Natural cooling / Air cooling





www.klacci.com

Headquarters and Operation Office

I-TEK Metal Manufacturing Co., Ltd.

📍 18 Gungye 3rd Road, Annan,
Tainan 70955, Taiwan.



T 886 6 3840722

F 886 6 3840715

E sd.klacci@gmail.com

sd@klacci.com

sd@iteklock.com.tw

Global Office

KLACCI Inc.

📍 California, USA

📍 Nevada, USA

T +1 (720) 675-5677

E sd@klacci.com

sd.klacci@gmail.com